

# Molecular Epidemiology of Antimicrobial Resistance in *Escherichia coli* Isolates from Clinical Specimens

Amira Abdulrahman Al-Shammari, Hiba Kareem Al-Musawi, Ahmed Fadhil Al-Khateeb

Department of Microbiology, College of Veterinary Medicine, University of Basrah, Iraq; Department of Bacteriology, Faculty of Medicine, University of Baghdad, Iraq

## ABSTRACT

A total of 49 different clinical samples (urine n=30, stool n=10, and blood n=8) were collected from patient admitted to the Al-Sadder medical City in Al-Najaf Governorate-Iraq. The results demonstrated that 49 specimens (100%) were diagnosed as *E. coli* by cultural, biochemical characteristics and Vitek2<sup>®</sup> system. Polymerase Chain Reaction has been used to detect of some genes which coding antimicrobial resistance in *E. coli* isolates. Regarding genes that responsible for ESBL enzymes (*bla<sub>CTX-M</sub>*, *bla<sub>OXA</sub>* and *bla<sub>TEM</sub>*), the current results proved that *bla<sub>TEM</sub>* genes have highest rate (97.95%) followed by *bla<sub>TEM</sub>* and *bla<sub>OXA</sub>* (93.75%) for each.

**Keywords:** *Escherichia coli*, *bla<sub>CTX-M</sub>*, *bla<sub>OXA</sub>*, *bla<sub>TEM</sub>*, by product, Iraq.

## INTRODUCTION

Antimicrobial resistance (AMR) is when a microbe *Extended spectrum beta lactamases Primers* evolves to become more or fully resistant to antimicrobials Primers used were supplied from Bioneer and were listed which previously could treat it<sup>1</sup>. When a bacterial strain in Table (1).

resistant to three or more different antimicrobial classes defined as MDR bacteria<sup>2</sup>.

Since meat and its byproducts are important sources of human deals, it should be free of contamination and hazard<sup>3</sup>. Thus *E. coli* and the other member of *Enterobacteriaceae* are important reservoirs of transferable antibiotic resistance<sup>4</sup>. *E. coli* may use various biochemical pathways to escape the lethal action of drugs: (i) decreased intracellular accumulation of the antibiotic by an alteration of outer membrane permeability, diminished transport across the inner membrane, or active efflux; (ii) alteration of the target by mutation or enzymatic modification; (iii) enzymatic detoxification of the drug; and (iv) by passing of the drug target. The coexistence of several of these mechanisms in the same host can lead to multidrug resistance (MDR)<sup>5</sup>.

Antibiotic resistance in MRSA is determined by the *mecA* gene, which encodes an altered penicillin binding protein (PBP-2a), that reduces the binding affinity for methicillin and other  $\beta$ -lactam antibiotics<sup>6</sup>.

## MATERIALS AND METHODS

### DNA extraction

Three to five pure and fresh colonies of *E. coli* were inoculated from MacConkey agar plate into 300  $\mu$ l of distilled water. Then cells was lysed by heating at 100 °C for 20 minutes (in water bath), and then immediately the cells were placed in ice for 30 minutes, and the other cellular components was removed by centrifugation at 8500 rpm for 10 min. Finally the supernatant was used as the DNA template<sup>7</sup>.

### PCR amplification

The reaction mixture contains Go Taq<sup>®</sup> Green Master

\*Author for Correspondence: [ibtisam.alazzawi@qu.edu.iq](mailto:ibtisam.alazzawi@qu.edu.iq)  
Mix, X2 which is premixed ready-to-use solution containing bacteriology derived TaqDNA polymerase dNTP, MgCl<sub>2</sub>, and reaction buffers at optimal concentrations and its recommended for any amplification reaction that to visualized by agarose gel electrophoreses and ethidium bromide staining.

### Agarose gel electrophoresis

Agarose gel was prepared by dissolving 1.5 gm of agarose powder in 100 ml of TBE buffer (pH 8) in boiling water bath, allowed to cool to 50 °C, then ethidium bromide (at concentration of 0.5 mg/ml) was added. A tape was placed across the end of the gel tray; the comb was fixed at one end of the tray for making wells used for loading DNA samples<sup>8</sup>.

## RESULTS AND DISCUSSION

CTX-M-type enzymes were the most common type of ESBL in *E. coli* isolates compared with SHV and TEM enzymes<sup>12</sup>. Since then, an increase in the CTX-M  $\beta$ lactamases has been seen in many countries in Europe and Asia<sup>13</sup>. The *bla<sub>CTX-M</sub>* was reported the most prevalent *blagene* in Korea<sup>14</sup>.

Results showed that *ermC* was detected in 6 (50%), another high detection show moderate prevalence 35.9%<sup>15</sup>, while another study found that 3.9% of staphylococci isolates carried *ermC*<sup>16</sup>.

Table 1: Target genes, amplification sizes and cycling conditions.

Gene name	Initial denaturation	Cycles	Denaturation	Primer annealing	Elongation	Final elongation	References
<i>bla<sub>TEM</sub></i>	94°C / 30 sec	35	94°C / 30 sec	45°C / 1 min	72°C / 1 min	72°C / 10 min (then 4°C → ∞	9
<i>bla<sub>CTX-M</sub></i>	94°C / 30 sec	35	94°C / 30 sec	60°C / 1 min	72°C / 1 min	72°C / 10 min (then 4°C → ∞	10
<i>bla<sub>OXA</sub></i>	94°C / 5 min	30	94°C / 50 sec	55°C / 50 sec	72°C / 1min	72°C / 10 min (then 4°C → ∞	11

Table 2: Prevalence of extended spectrum beta lactamases genes of *E. coli* according to infections site (n=48).

Genes	Urine Total Isolates (n=30)	Stool Total Isolates (n=10)	Blood Total Isolates (n=8)	Total (48)
<i>bla<sub>CTX-M</sub></i>	29 (96.66%)	9 (90%)	7 (87.5%)	45 (93.75%)
<i>bla<sub>OXA</sub></i>	29 (96.66%)	9 (90%)	7 (87.5%)	45 (93.75%)
<i>bla<sub>TEM</sub></i>	30 (61.22%)	10 (20.40%)	8 (16.32%)	48 (97.95%)

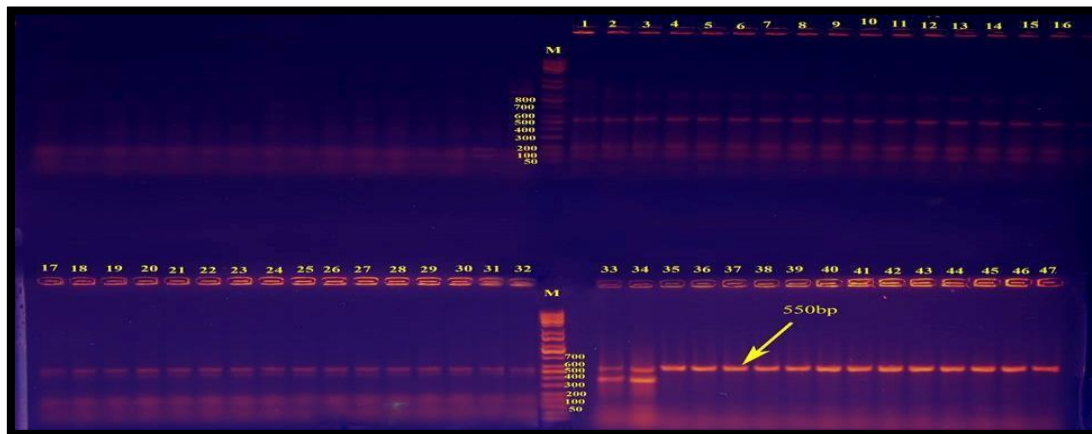


Photo 1: Ethidium bromide-stained agarose gel electrophoresis of monoplex PCR amplified products from extracted total DNA of 49 *E. coli* isolates isolated from different clinical specimens. Lane: (1 to 47 isolates) amplified with diagnostic *bla<sub>CTX-M</sub>* gene, show positive results at 550 bp . The electrophoresis was performed at 80 volt for 95 minutes. (L): DNA molecular size marker (50 bp ladder).

On the other hand, TEM-1, which is responsible for most of the ampicillin resistance in; 94% of *E. coli* strains isolated in Spain, 89% of *E. coli* strains isolated in Hong Kong, and in 78% of *E. coli* strains isolated in London<sup>17</sup>. The OXA enzymes are regarded as OXA-type ESBLs and have been discovered mainly in *P. aeruginosa* in specimens from Turkey and France<sup>18</sup>.

Pyridoxine (V B6) significantly increased growth of *Cymbopogon citrates* L. plants, especially in plants treated with 200 mg/l<sup>19</sup>. Similar results were recorded by<sup>20</sup> on *Antirrhinum majus* plant, and on corn plant<sup>21,22</sup>. M. J., Struelens, A.,

REFERENCES

1. Aljanaby A.A.J.J., Antibacterial activity of an aqueous extract of *Petroselinum crispum* leaves against pathogenic bacteria isolated from patients with burns infections in Al-najaf Governorate, Iraq. Res Chem Intermed.2012, 38(9).
2. Magiorakos, A.P. A., Srinivasan, R. B., Carey, Y., Carmeli, M. E., Falagas, C. G., Giske, S., Harbarth, J. F., Hindler, G., Kahlmeter, B., Olsson-Liljequist, D. L., Paterson, L. B. , Rice, J. , Stelling,

## CONCLUSION

Our findings showed that there was relationship between phenotypic and genotypic detection of antimicrobial resistance in *E. coli*.

Vatopoulos, J. T., Weber, and D. L. Monnet., Multidrug-resistant, extensively drug-resistant and pandrug-resistant bacteria: an International expert proposal for interim standard definitions for acquired resistance. *Clin Microbiol Infect.* 2012, 18: 268-281.

3. Abdalnabi, J. A., Conventional and molecular approaches in bacterial contamination detection for meatsamples. *International Journal of PharmTech Research.* 2016, 9(3): 212-218.
4. Franciczek, R., Dolna, I., Krzyzanowska, B., Szufnarowski, B., Kowalska-Krochmal., Zielińska, M., Conjugative transfer frequency of resistance genes from ESBL-producing Enterobacteriaceae strains isolated from patients hospitalized in pediatric wards. *Med Dosw Mikrobiol.* 2006, 58(1): 41-51.
5. Florence, D., Isabelle, P., Roland, L., Ekkehard, C., Patrice, C., Modes and modulations of antibiotic resistance gene expression. *Clin. Microbiol.* 2007, 79114.
6. Velasco, V., Sherwood, J.S., Rojas-García, P.P., and Logue, C.M., Multiplex real-time PCR for detection of *Staphylococcus aureus*, *mecA* and Panton-Valentine Leukocidin (PVL) genes from selective enrichments from animals and retail meat. *PLoS One.* 2014, 9(5): 97617.
7. Madhan Sugumar, K. M., Kumar., Anand Manoharan., Anand Anbarasu., Sudha Ramaiah., Detection of *OXA1* b-lactamase gene of *Klebsiella pneumoniae* from blood stream infections (BSI) by conventional PCR and in silicone analysis to understand the mechanism of *OXA* mediated resistance. 2014, 9(3):1-8.
8. Sambrook, J., Rusell, D.W., Molecular cloning: A laboratory manual, Third ed. Cold Spring Harbor: Cold Spring Harbor Laboratory Press, NY. 2001.
9. Hujer, K. M., Hujer, A. M., Hulten, E. A., Bajaksouzian, S., Adams, J. M., Donskey, C. J., Ecker, D. J., Massire, C., Eshoo, M. W., Sampath, R., Thomson, J. M., Rather, P. N., Craft, D. W., Fishbain, J. T., Ewell, A. J., Jacobs, M. R., Paterson, D. L. and Bonomo, R. A., Analysis of antibiotic resistance genes in multidrug-resistant *Acinetobacter sp.* isolates from military and civilian patients treated at the Walter Reed Army Medical Center. *Antimicrob. Agents Chemother.* 2006, 50(12): 4114-4123.
10. Koichiro, W., Reiko, K., Ritsuko, M., Shinya, U., Toyohiko, W., Koichi, M., Hiromi K., Experimental and clinical studies on fluoroquinolone-insusceptible *Escherichia coli* isolated from Patients with urinary tract infections from 1994 to 2007 *Acta Med. Okayama.* 2009, 63(5): 263-272.
11. Karami, N., Hannoun, C., Colonization dynamics of ampicillin-resistant *Escherichia coli* in the infantile colonic microbiota. *J. Antimicrob. Chemother.* 2008, 62: 703-708.
12. Yongjung, P., M.D., Hyun-Kyung, K. Ph.D., Kwon B. Ph.D., Juwon, K., Jae-Seok, M.D., Kim, M.D., Young U, M.D., Seok-Hoon, J. M.D., Kyungwon, L. M.D., Prevalence of the extended-spectrum  $\beta$ -lactamase and *qnr* genes in clinical isolates of *Escherichia coli*. *Korean J Lab Med.* 2009, 29:218-23.
13. Livermore, D. M., Introduction: The challenge of multiresistance. *Int. J. Antimicrob. Agents.* 2007, 29(3): S1-7.
14. Kiratisin, P., Apisarnthanarak, A., Laestripa, C., Saifon, P., Molecular characterization and epidemiology of extended spectrum- $\beta$ -lactamase-producing *Escherichia coli* and *Klebsiella pneumoniae* isolates causing health care-associated infection in Thailand, Where the CTXM Family. *Antimicrob. Agents Chemother.* 2008, 52(8): 2818-2824.
15. Xu, J., Shi, C., Song, M., Xu, X., Yang, P., Paoli, G., Shi, X., Phenotypic and genotypic antimicrobial resistance traits of foodborne *Staphylococcus aureus* isolates from Shanghai. *J Food Sci.* 2014, 79(4): M635-42.
16. Guran, H.S., and Kahya, S., Species Diversity and Phenotypic and Genotypic Antibiotic Resistance Patterns of *Staphylococci* Isolated from Retail Ground Meats. *J Food Sci.* 2015, 80 (6): M1291-8.
17. Livermore, D. M., B-lactamases in Laboratory and clinical resistance. *Clin Microbiol.* 1995, 8: 557-84.
18. Harada, S., Ishii, Y., Yamaguchi, K., Extended-spectrum  $\beta$ -lactamases: implications for the clinical laboratory and therapy. *Korean J. Lab. Med.* 2008, 28: 401-412.
19. Orabi, Salwa A., Iman M. Talaat, Laila K. Balbaa, Abdalla El-Moursi., Influence of pyridoxine and spermine on lemongrass (*Cymbopogon citratus*) plants. *Nusantara Bioscience.* 2015, 7: 139-143.
20. Badawy E.M., Kandil M.M., Habib A. M., Mahgoub. M. H., El-Sayed, I. M., Anatomical structure of *Antirrhinum majus* plant stem and leaf as affected by diatomite, putrescine and alpha-tocopherol treatments. *Int.J. ChemTech Res.* 2015, 8(12): 488-496.
21. Ahmed, M.A., Magda, A.F., Shalaby and M.B.A. Elkomy., Alleviation of Water Stress effects on Corn by Polyamine compounds under Newly Cultivated Sandy Soil conditions. *Int.J. ChemTech Res.* 2015, 8(12): 497-508.
22. Aljanaby, A.A.J.J and Gafil, F.A.A, Comparative study among different antibiotics effect on aerobic

pathogenic bacteria that cause otitis media and urinary tract infection in Al-Manathera city in Iraq. Res Chem Intermed.2012, 38(9).